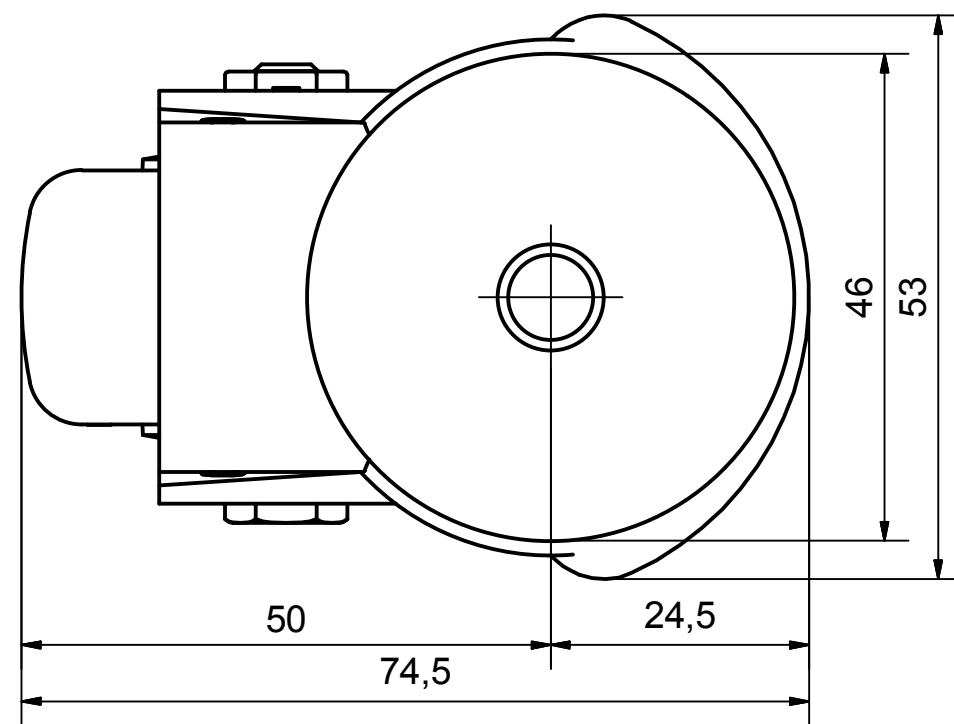



**Load Capacity: 50kg, for speed up to 4km/h
(According to EN 12530)**



 PRODUCTION OF INSTITUTIONAL CASTORS AND WHEELS THESSALONIKI - GREECE This drawing is the property of RODA S.A. It must neither be reproduced in any manner nor shall it be submitted to third parties or competitors without our written consent.	PERMIS. VARIATIONS:		PART No:	
	SURFACE FINISH :		UNF . DIM.:	
DESIGNED	26/6/2013	E.POLIMEROPOULOU	PART NAME : M.050.CPC.BS	
DRAWN	26/6/2013	E.POLIMEROPOULOU	PART DESCRIPTION : Swivel castor, steel support, bolt stem M10X20mm.Wheel 50x24mm,electric conductive non marking grey rubber (82shA) double ball	
CHECKED	26/6/2013	H.SAATZOGLOU		
C3			DRAWING NUMBER :	SHEET No.
B2			QUANTITY	SCALE
A1			REPLACE :	GEN. DWG. NUM. :
A/A				